

SF11 THRU SF18

SUPERFAST RECOVERY RECTIFIER

REVERSE VOLTAGE: 50 to 600 VOLTS

FORWARD CURRENT: 1.0 AMPERE

<http://www.njzrg.com>

FEATURES

- High surge capability
- Low forward voltage, high current capability
- Hermetically sealed
- Superfast recovery times
- Exceeds environmental standards of MIL-S-19500/228
- Low leakage.

MECHANICAL DATA

Case: Molded plastic, DO-41

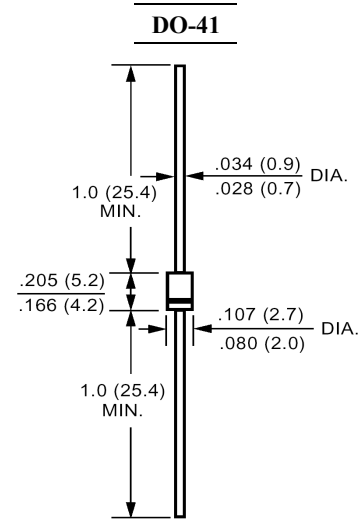
Epoxy: UL 94V-O rate flame retardant

Lead: Axial leads, solderable per MIL-STD-202, method 208 guaranteed

Polarity: Color band denotes cathode end

Mounting position: Any

Weight: 0.012ounce, 0.33gram



Dimensions in inches and (millimeters)

Maximum Ratings and Electrical Characteristics

Ratings at 25 °C ambient temperature unless otherwise specified.

Single phase, half wave, 60Hz, resistive or inductive load.

For capacitive load, derate current by 20%.

	Symbols	SF11	SF12	SF13	SF14	SF15	SF16	SF18	Units	
Maximum Recurrent Peak Reverse Voltage	V_{RRM}	50	100	150	200	300	400	600	Volts	
Maximum RMS Voltage	V_{RMS}	35	70	105	140	210	280	420	Volts	
Maximum DC Blocking Voltage	V_{DC}	50	100	150	200	300	400	600	Volts	
Maximum Average Forward Rectified Current .375"(9.5mm) Lead Length at $T_A=55$	$I_{(AV)}$	1.0							Amp	
Peak Forward Surge Current, 8.3ms single half-sine-wave superimposed on rated load (JEDEC method)	I_{FSM}	30							Amp	
Maximum Forward Voltage at 1.0A DC and 25	V_F	0.95			1.25		1.7		Volts	
Maximum Reverse Current at $T_A=25$ at Rated DC Blocking Voltage $T_A=100$	I_R	5.0			500					uAmp
Typical Junction Capacitance (Note 1)	C_J	50			25				pF	
Typical Thermal Resistance (Note 2)	$R_{\theta JA}$	50							/W	
Maximum Reverse Recovery Time (Note 3)	T_{RR}	35					50			nS
Operating Junction Temperature Range	T_J	-55 to +125								
Storage Temperature Range	T_{stg}	-55 to +150								

NOTES:

1- Measured at 1 MHz and applied reverse voltage of 4.0 VDC.

2- Thermal Resistance from Junction to Ambient 0.375"(9.5mm) lead length P.C.B. Mounted.

3- Reverse Recovery Test Conditions : $I_F=.5A$, $I_R=1A$, $I_{RR}=.25A$.

SF11 THRU SF18

SUPERFAST RECOVERY RECTIFIER

RATINGS AND CHARACTERISTIC CURVES

<http://www.njzrg.com>

FIG.1- REVERSE RECOVERY TIME CHARACTERISTIC AND TEST CIRCUIT DIAGRAM

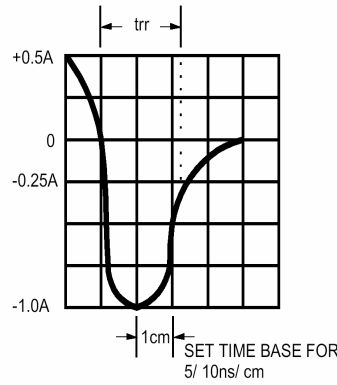
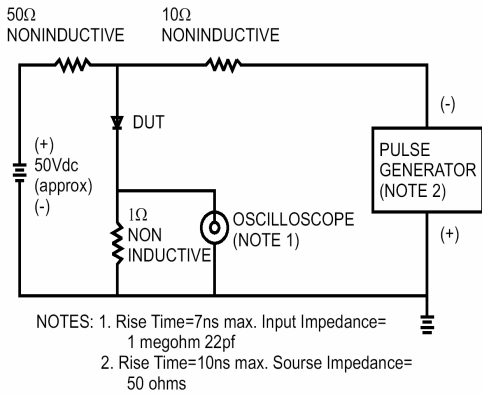


FIG.2- MAXIMUM AVERAGE FORWARD CURRENT DERATING

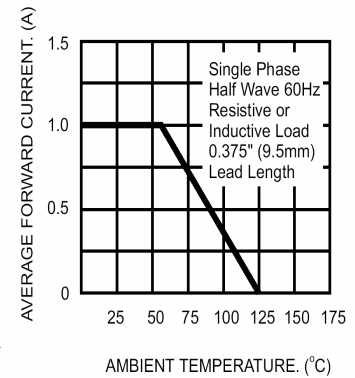


FIG.3- TYPICAL REVERSE CHARACTERISTICS

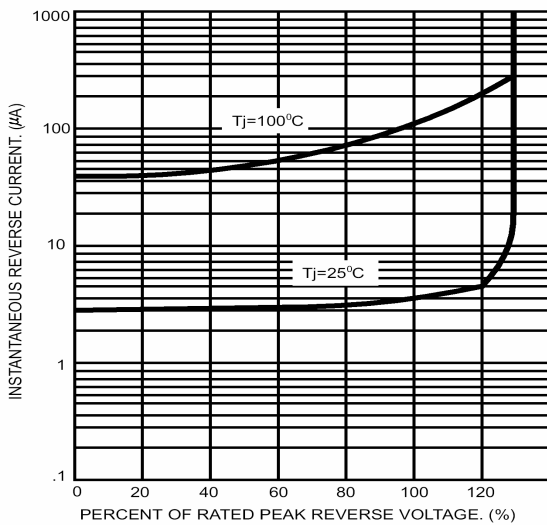


FIG.4- TYPICAL FORWARD CHARACTERISTICS

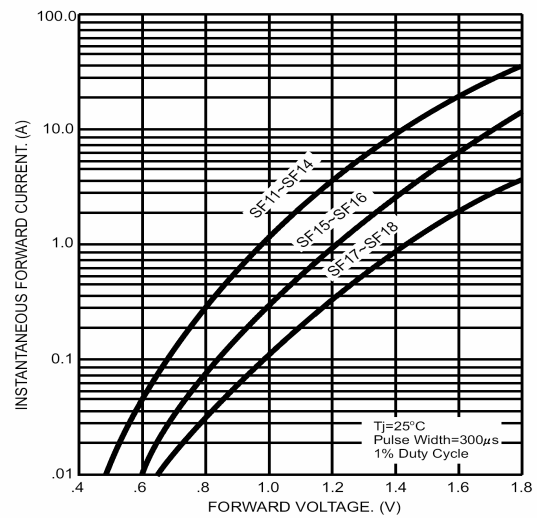


FIG.5- MAXIMUM NON-REPETITIVE FORWARD SURGE CURRENT

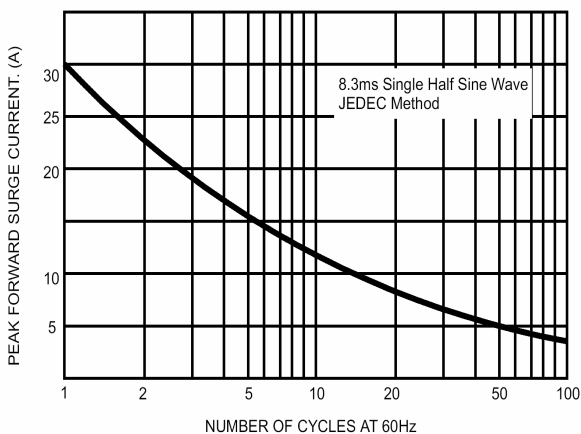


FIG.6- TYPICAL JUNCTION CAPACITANCE

